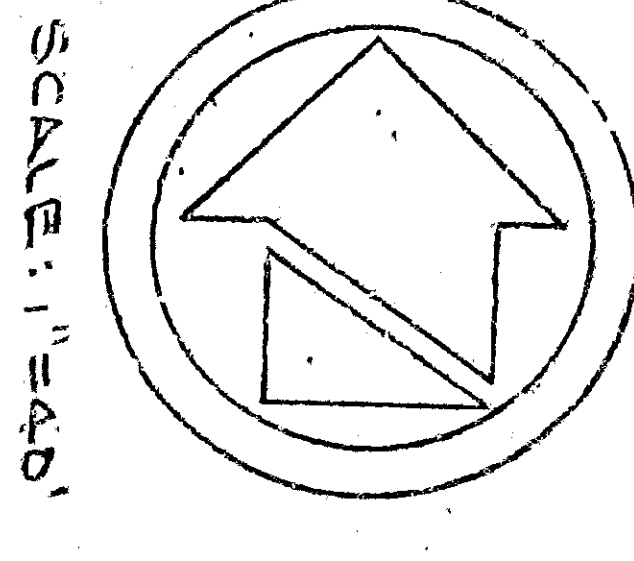
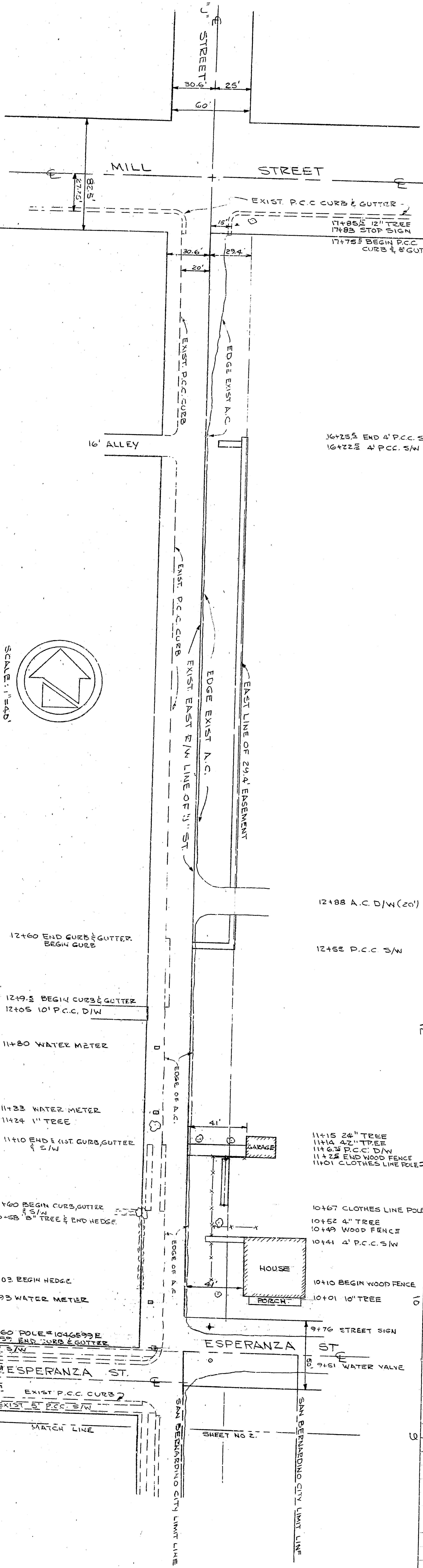


DESIGNED BY
 CITY ENGINEER
 REGISTERED CIVIL ENGINEER No. 3598
 DRAWING NO. 3598
 CHECKED BY
 PROJECT NO.
 SHEETS 2 SHEETS

DEPARTMENT OF ENGINEERING
 CITY OF SAN BERNARDINO
 TOPO ON "J" STREET
 29'4" STREET R/W EASEMENT FROM
 MILL ST SOUTH TO HAZEL AVE.

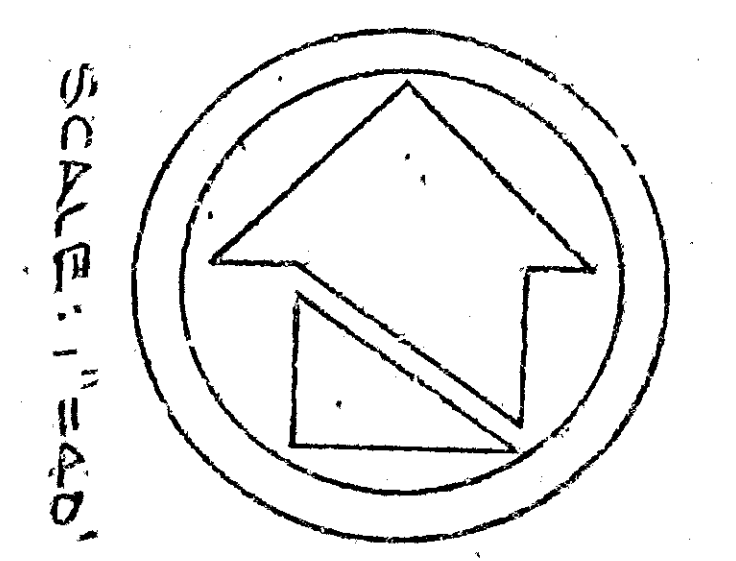
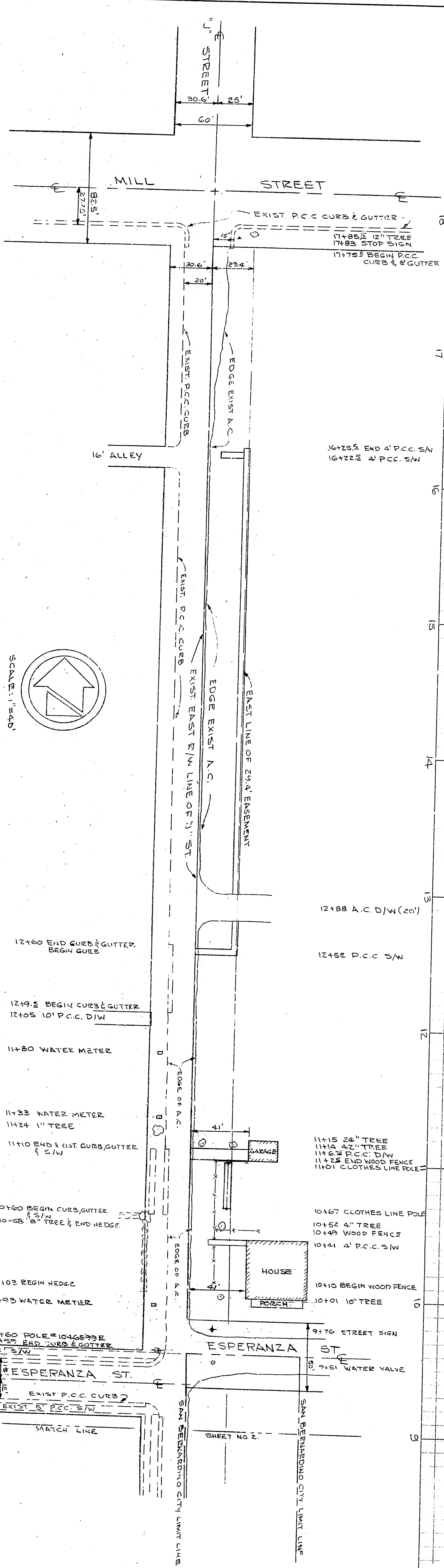
COUNTY OF SAN BERNARDINO
 CITY OF SAN BERNARDINO
 ENGINEER
 REGISTERED CIVIL ENGINEER No. 3598
 DRAWING NO. 3598
 SHEETS 2 SHEETS



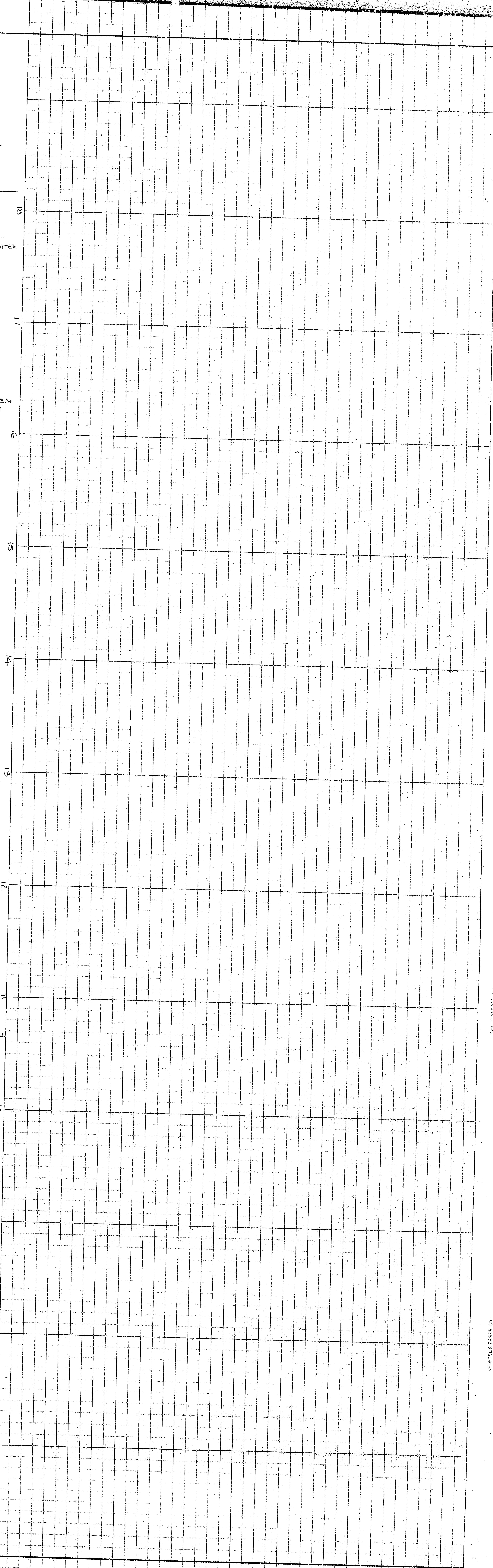
SCALE: 1" = 40'

PREPARED BY: [blank] 1964
 CITY ENGINEER: [blank]
 REGISTERED CIVIL ENGINEER NO. [blank]
 DRAWING NO. 3598
 CHECKED BY: [blank] BILL
 SHEET 2 OF [blank]
 RECOMMENDED
 DEPARTMENT OF ENGINEERING
 CITY OF SAN BERNARDINO
 TOPO ON "J" STREET
 29'4" STREET R/W EASEMENT FROM
 MILL ST SOUTH TO HAZEL AVE.

CITY OF SAN BERNARDINO, CALIFORNIA
 ENGINEER IN CHARGE: [blank]
 CHECKED BY: [blank]
 DATE: [blank]



DESIGNED BY: [blank] 1964
 CITY ENGINEER
 REGISTERED CIVIL ENGINEER No. [blank]
 DRAWING NO. 3398
 CHECKED BY: BILL
 SHEETS 2 SHEETS
 DEPARTMENT OF ENGINEERING
 CITY OF SAN BERNARDINO
 TOPO ON "J" STREET
 29'4" STREET R/W EASEMENT FROM
 MILL ST SOUTH TO HAZEL AVE.



DATE: 11/15/64

SCALE: 1"=40'